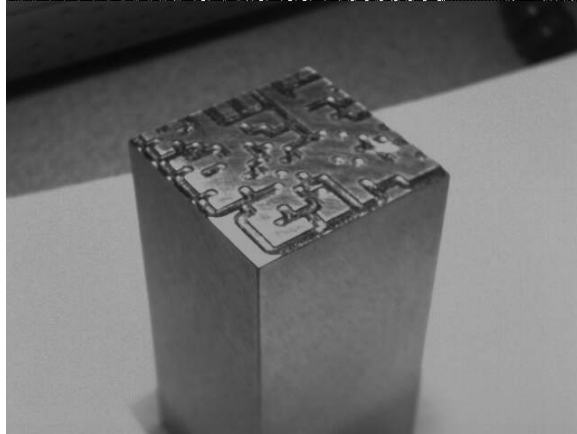


Progressive Die Error Proofing Using Data Matrix Perishable Tooling for High Volume Parts

Prepare Die Tooling - Data Matrix tooling stamp creates part number in barcode. If Die creates a Left and Right Part, tooling is created for both Left and Right Sides.



1) **Setup for Run** – Operator identifies to Freedom Error Proof which finished part number is running and which intended customer or internal label is to be printed for each box produced.

2) **Stamp Parts** – Each part is now marked with corresponding data matrix part number





3) **Earn a Label** – Once the required number of pieces fill box, operator picks up a part from the box and reads data matrix barcode on part. Once done, if part is correct for intended customer, box label is automatically printed at the pack station. Operator applies label to box.

Option – You can require that operator scan box label to verify it was applied to box before Freedom resets box count to zero for next run.

For more information contact:

Freedom Technologies
10370 Citation Dr., Suite 200
Brighton, MI 48116
P: 810-227-3737
sales@freedomcorp.com
www.freedomcorp.com

ERROR PROOF[®]
MANUFACTURING EXECUTION SYSTEMS
IDENTIFY TRACK MANAGE